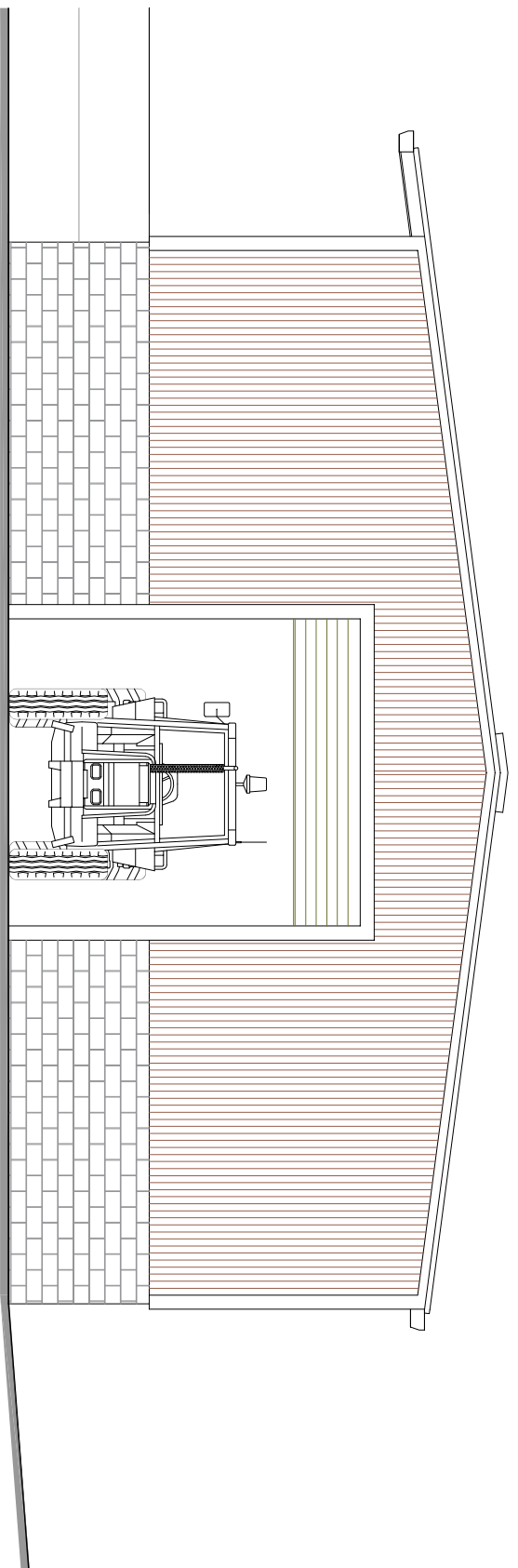
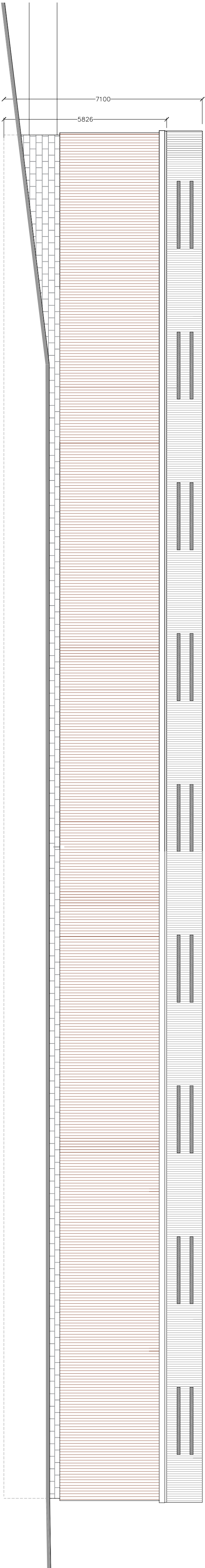


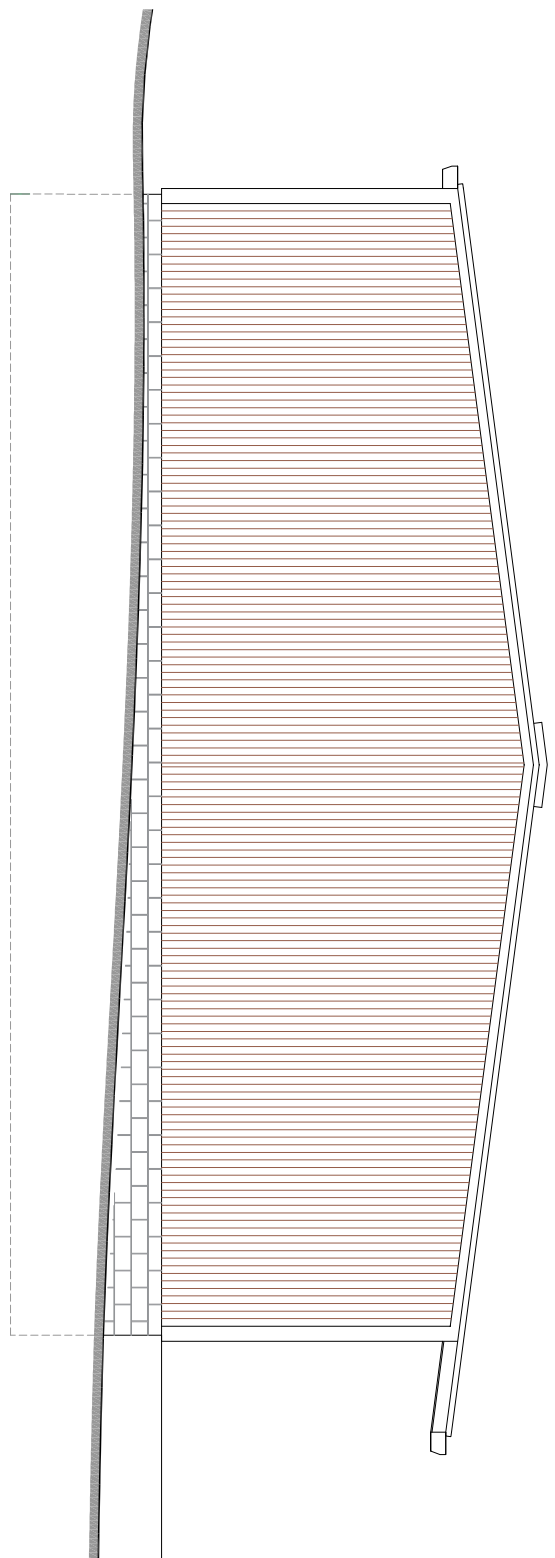
South East Elevation 1:100 @ A1



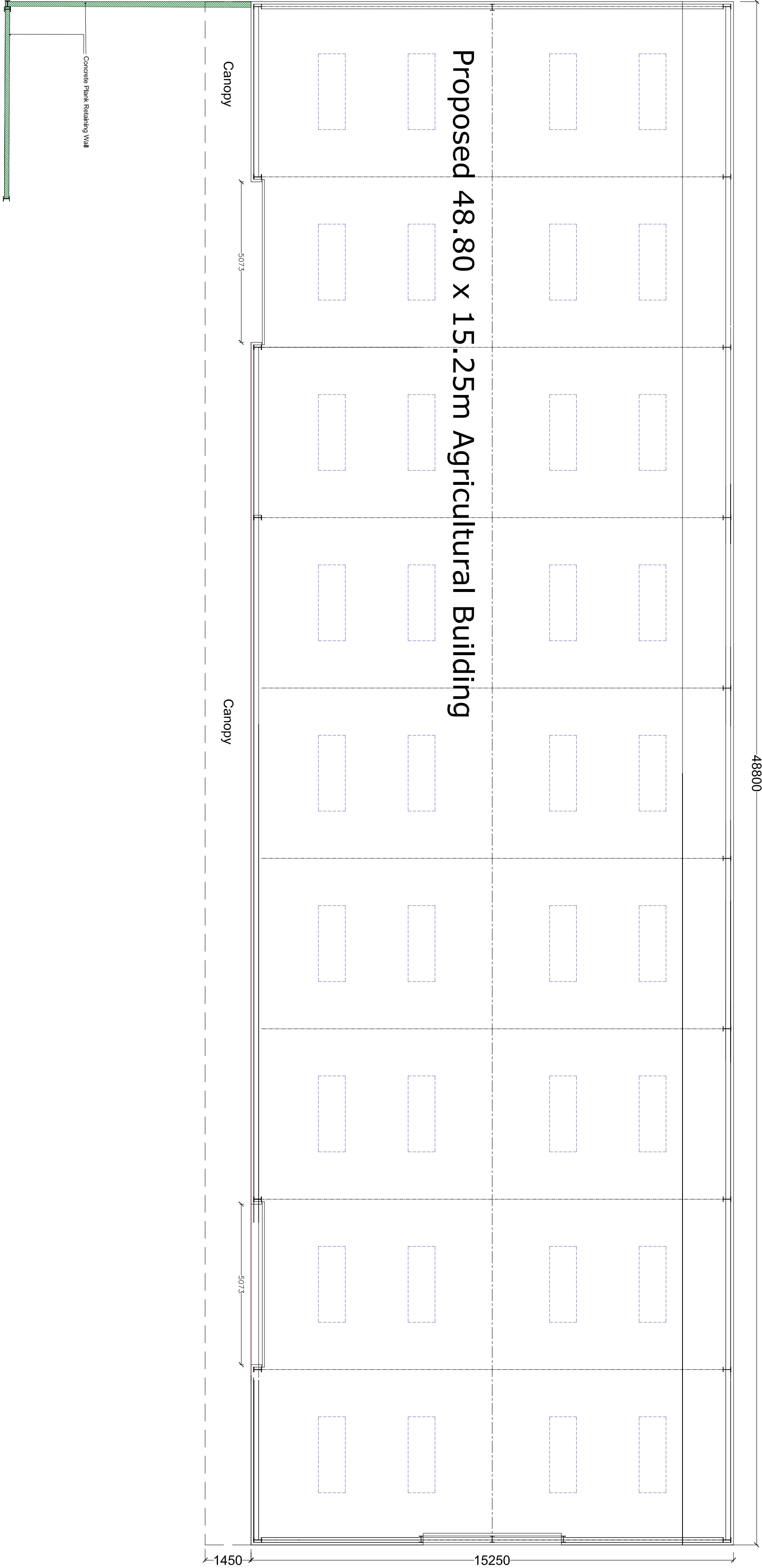
North East Elevation 1:100 @ A1



North West Elevation 1:100 @ A1



South West Elevation 1:100 @ A1



Plan 1:100 @ A1

**EXTERNAL FINISHES**  
Roof: Grey cement concrete with 15% profiled  
Walls: Black plastic coated steel pannels and concrete  
Floor: Black plastic coated steel pannels and concrete  
Windows: Black plastic coated steel pannels and concrete  
Doors: Black plastic coated steel pannels and concrete  
Roof: Grey cement concrete with 15% profiled  
Walls: Black plastic coated steel pannels and concrete  
Floor: Black plastic coated steel pannels and concrete  
Windows: Black plastic coated steel pannels and concrete  
Doors: Black plastic coated steel pannels and concrete  
Roof: Grey cement concrete with 15% profiled  
Walls: Black plastic coated steel pannels and concrete  
Floor: Black plastic coated steel pannels and concrete  
Windows: Black plastic coated steel pannels and concrete  
Doors: Black plastic coated steel pannels and concrete

| Rev./Drawn | Comments | Date |
|------------|----------|------|
| 1          |          |      |
| 2          |          |      |
| 3          |          |      |
| 4          |          |      |
| 5          |          |      |
| 6          |          |      |
| 7          |          |      |
| 8          |          |      |
| 9          |          |      |
| 10         |          |      |

**MAC**  
**ARCHITECTURAL DESIGN LTD**  
Moorland House, 123 Moorland Road, Burnham, ST6 1JD,  
T:01782 503302 E:adm@mac-arch.co.uk

**Client:**  
**Mr D Clement**

**Project:**  
**Proposed Agricultural Building**  
**at Ball Green Farm, Gorsey Bank,**  
**Ball Green, Stoke-on-Trent, ST6 8AR**

**Title:**  
**Plans & Elevations**

**Status:**  
**Planning.**